

# Matthew Colville Reid

## Died 22<sup>nd</sup> May 1916

**Died: 22<sup>nd</sup> May 1916**

**Matthew Colville Reid Reg No: 17215**

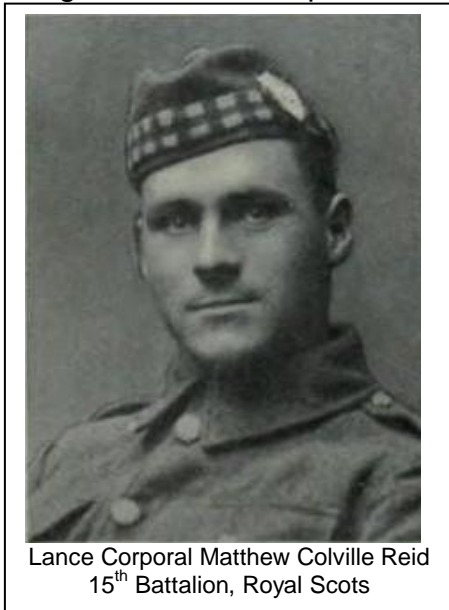
Sadly the war records of Matthew could not be found but what we can glean from the Commonwealth War Graves Commission is as follows: He was a 21 year old Lance Corporal when he was killed whilst serving with the 15<sup>th</sup> Battalion, Royal Scots.

Matthew was the son of John and Janet Ralston Cordiner Reid, of Gigha, Argyll, and later East Gogar, Blairlogie, Stirling. Prior to joining the army Matthew was a student at Edinburgh University.

The 1901 census shows that he was still living in Drumyeonmore on Gigha or Cara. At this time he was an 8 year old scholar living with both of his parents and siblings.



Cap Badge of the Royal Scots



Lance Corporal Matthew Colville Reid  
15<sup>th</sup> Battalion, Royal Scots

Matthew's father, John Reid (aged 49) was a farmer and his mother was Jessie R Reid (49 years) and listed as a farmer's wife. His siblings were: Gavin Reid (aged 28); Alexander C Reid (aged 28),; John Reid (aged 19); James Reid (aged 18), all brothers were listed as farmer's sons; Mary A Reid (aged 12), scholar; Jeanie S Reid (aged 10), scholar; Jessie R Reid (aged 4).

He is buried in Becourt Military Cemetery, Becordel-Becourt.

### Historical Information

The Military Cemetery was begun in August, 1915, by the 51st (Highland) Division, and carried on by the 18th and other Divisions in the line until the Battles of the Somme, 1916. It continued in use, chiefly by Field

Ambulances, until April, 1917; and Plot II was made by the 18th Division at the end of August, 1918.

There are now 713 casualties of the 1914-1918 war commemorated in this site. Of these, 8 are unidentified and a special memorial is erected to a soldier from the United Kingdom buried among them. Three German graves have been removed.

The cemetery covers an area of 4,327 square metres and is enclosed by a rubble wall.



© War Graves Commission  
Becourt Military Cemetery, Becordel-Becourt